

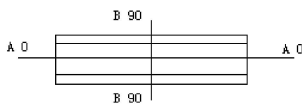
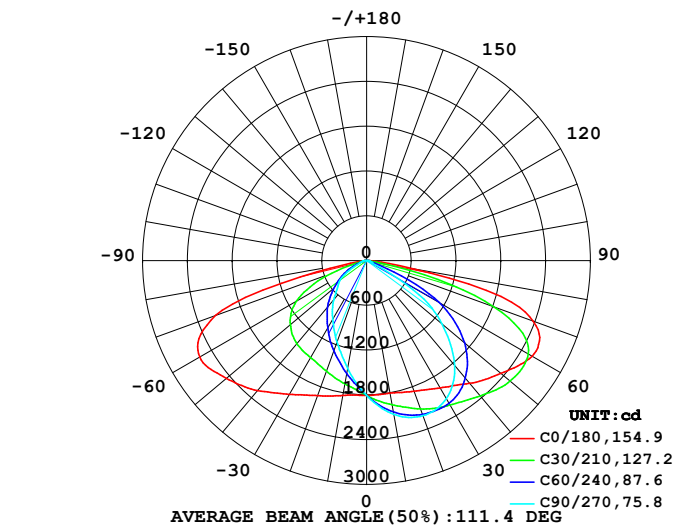
## LUMINAIRE PHOTOMETRIC TEST REPORT

Test:U:0V I:0A P:35.000W PF:0.0000 Freq:0Hz  
Lamp Flux:6801.01x1 lm

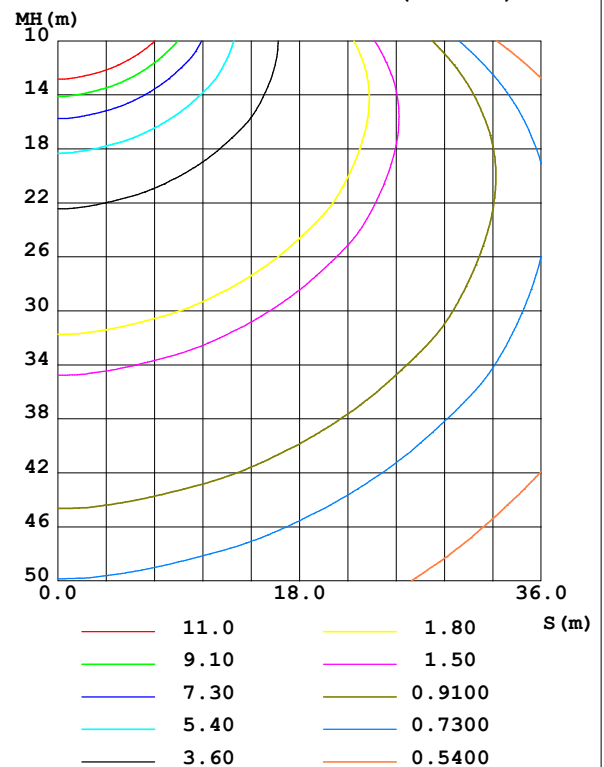
NAME:	TYPE:	WEIGHT:
SPEC.:	DIM.:	SERIAL No.:
MFR.:	SUR.:	Shielding Angle:

DATA OF LAMP		PHOTOMETRIC DATA				Eff: 194.31 lm/W
MODEL	PD	I <sub>max</sub> (cd)	2861	S/MH(C0/180)	1.88	
NOMINAL POWER(W)	35	LOR(%)	100.0	S/MH(C90/270)	0.79	
RATED VOLTAGE(V)		TOTAL FLUX(lm)	6801.0	η UP,DN(C0-180)	0.0,63.4	
NOMINAL FLUX(lm)	6801.01	CIE CLASS	DIRECT	η UP,DN(C180-360)	0.0,36.6	
LAMPS INSIDE	1	η up (%)	0.0	CIBSE SHR NOM	1.50	
TEST VOLTAGE(V)		η down (%)	100.0	CIBSE SHR MAX	1.50	

LUMINOUS INTENSITY DISTRIBUTION DIAGRAM



C0 PLANE ISOLUX DIAGRAM (UNIT:lx)



C Range: 0 - 360DEG  
C Interval: 15.0DEG  
Test Speed: HIGH  
Temperature: 25.3 °C  
Operators:  
Test Date: 2023-03-27

γ Range: 0 - 90DEG  
γ Interval: 1.0DEG  
Test System: EVERFINE GO-2000B\_V1 SYSTEM V2.00.458  
Humidity: 65.0%  
Test Distance: 9.420m [K=1.0000]  
Remarks:

## ZONAL FLUX DIAGRAM

## ZONAL FLUX DIAGRAM:

$\gamma$	C0	C45	C90	C135	C180	C225	C270	C315	$\gamma$	$\Phi$ zone	$\Phi$ total	%lum, lamp
10	1805	2013	2090	2021	1834	1600	1471	1561	0- 10	172.1	172.1	2.53,2.53
20	1863	2164	2211	2194	1926	1411	1165	1374	10- 20	508.5	680.6	10,10
30	1970	2257	2136	2286	2069	1236	911.9	1203	20- 30	820.5	1501	22.1,22.1
40	2148	2244	1834	2319	2276	1041	685.4	1018	30- 40	1086	2587	38,38
50	2351	2124	1317	2187	2455	827.4	494.0	818.9	40- 50	1273	3860	56.8,56.8
60	2563	1775	488.1	1745	2582	537.5	278.4	538.3	50- 60	1322	5182	76.2,76.2
70	2376	726.7	71.87	531.0	2154	194.4	93.30	217.8	60- 70	1073	6255	92,92
80	644.0	50.25	35.59	42.54	221.9	54.66	48.43	61.34	70- 80	499.0	6754	99.3,99.3
90	11.61	3.052	2.258	3.060	7.680	4.581	4.093	6.787	80- 90	47.01	6801	100,100
100									90-100			
110									100-110			
120									110-120			
130									120-130			
140									130-140			
150									140-150			
160									150-160			
170									160-170			
180									170-180			
DEG	LUMINOUS INTENSITY:cd									UNIT:lm		

Conical surface Flux(90deg): 3207.8 lm

%lum = 47.2%

%lamp = 47.2%

Conical surface Flux(130deg): 5771.9 lm

%lum = 84.9%

%lamp = 84.9%

C Range: 0 - 360DEG  
 C Interval: 15.0DEG  
 Test Speed: HIGH  
 Temperature:25.3℃  
 Operators:  
 Test Date:2023-03-27

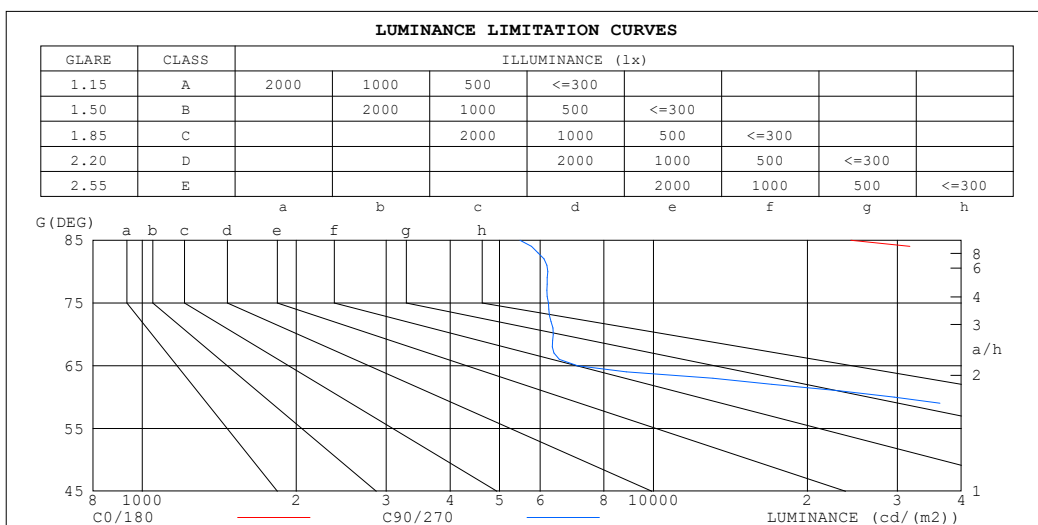
$\gamma$  Range: 0 - 90DEG  
 $\gamma$  Interval: 1.0DEG  
 Test System:EVERFINE GO-2000B\_V1 SYSTEM V2.00.458  
 Humidity:65.0%  
 Test Distance:9.420m [K=1.0000]  
 Remarks:

## LUMINANCE LIMITATION CURVES

Test:U:0V I:0A P:35.000W PF:0.0000 Freq:0Hz

Lamp Flux:6801.01x1 lm

NAME:	TYPE:	WEIGHT:
SPEC.:	DIM.:	SERIAL No.:
MFR.:	SUR.:	Shielding Angle:



LUMINANCE cd/(m2)		
G (DEG)	C0/180	C90/270
85	24337	5478
80	112856	6212
75	219177	6230
70	211388	6369
65	184011	7101
60	156003	29588
55	130929	53510
50	111315	62081
45	96934	68318

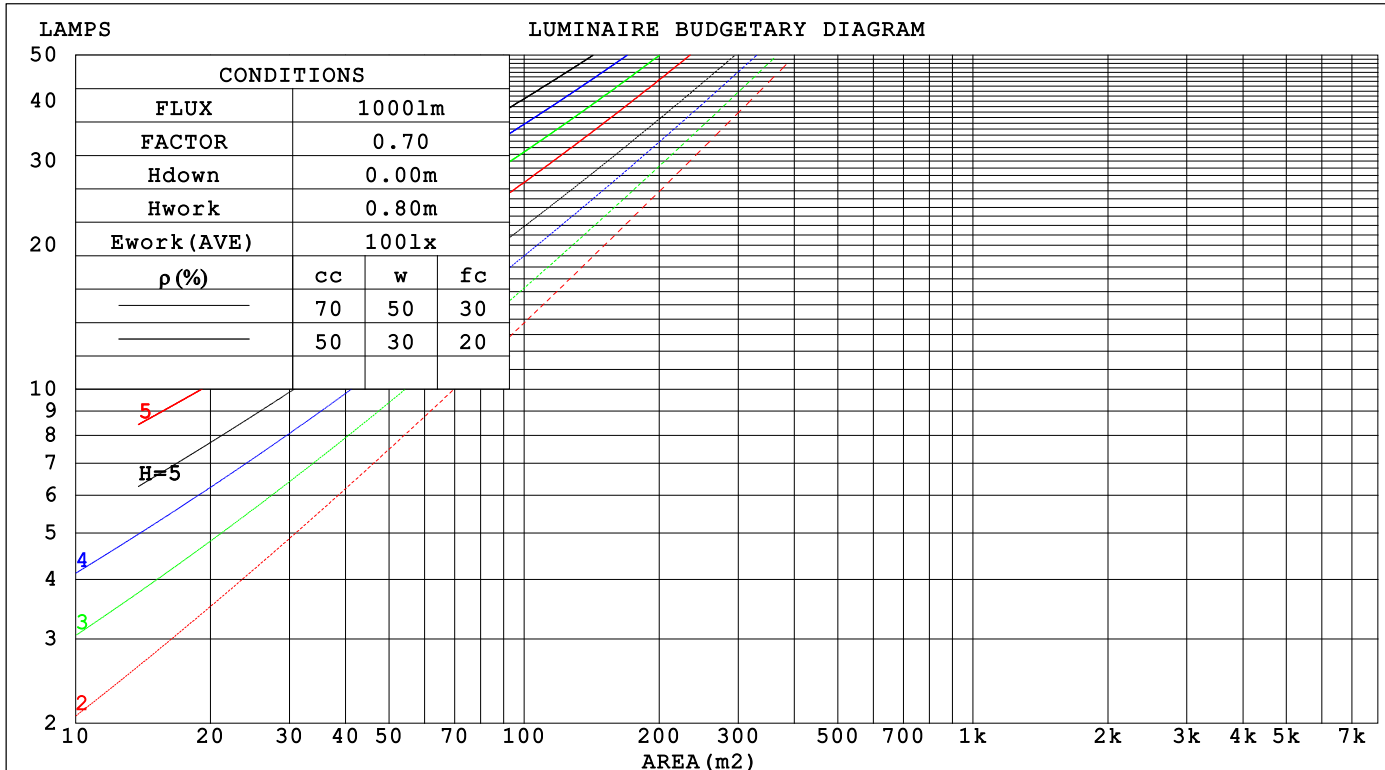
C Range: 0 - 360DEG  
C Interval: 15.0DEG  
Test Speed: HIGH  
Temperature:25.3℃  
Operators:  
Test Date:2023-03-27

γ Range: 0 - 90DEG  
γ Interval: 1.0DEG  
Test System:EVERFINE GO-2000B\_V1 SYSTEM V2.00.458  
Humidity:65.0%  
Test Distance:9.420m [K=1.0000]  
Remarks:

## CU AND LUMINAIRE BUDGETARY ESTIMATE DIAGRAM

Test:U:0V I:0A P:35.000W PF:0.0000 Freq:0Hz Lamp Flux:6801.01x1 lm		
NAME:	TYPE:	WEIGHT:
SPEC.:	DIM.:	SERIAL No.:
MFR.:	SUR.:	Shielding Angle:

pcc	80%			70%			50%			30%			10%			0														
pw	50%	30%	10%	50%	30%	10%	50%	30%	10%	50%	30%	10%	50%	30%	10%	0														
pfc	20%			20%			20%			20%			20%			0														
RCR	RCR:Room Cavity Ratio															Coefficients of Utilization(CU)														
0.0	1.19	1.19	1.19	1.16	1.16	1.16	1.11	1.11	1.11	1.06	1.06	1.06	1.02	1.02	1.02	1.00														
1.0	1.04	.99	.95	1.01	.97	.94	.97	.94	.91	.93	.90	.88	.90	.87	.85	.83														
2.0	.89	.82	.76	.87	.81	.75	.84	.78	.74	.81	.76	.72	.77	.74	.70	.68														
3.0	.78	.69	.62	.76	.68	.62	.73	.66	.60	.70	.64	.59	.67	.63	.58	.56														
4.0	.68	.59	.52	.67	.58	.51	.64	.56	.50	.62	.55	.50	.59	.54	.49	.47														
5.0	.60	.51	.44	.59	.50	.43	.57	.49	.43	.55	.48	.42	.53	.47	.42	.40														
6.0	.54	.44	.37	.53	.44	.37	.51	.43	.37	.49	.42	.37	.47	.41	.36	.34														
7.0	.48	.39	.33	.47	.39	.32	.46	.38	.32	.44	.37	.32	.43	.37	.32	.30														
8.0	.44	.35	.29	.43	.35	.29	.42	.34	.28	.40	.33	.28	.39	.33	.28	.26														
9.0	.40	.31	.26	.39	.31	.25	.38	.31	.25	.37	.30	.25	.36	.30	.25	.23														
10.0	.37	.28	.23	.36	.28	.23	.35	.28	.23	.34	.27	.23	.33	.27	.23	.21														



C Range: 0 - 360DEG  
C Interval: 15.0DEG  
Test Speed: HIGH  
Temperature:25.3℃  
Operators:  
Test Date:2023-03-27

γ Range: 0 - 90DEG  
γ Interval: 1.0DEG  
Test System:EVERFINE GO-2000B\_V1 SYSTEM V2.00.458  
Humidity:65.0%  
Test Distance:9.420m [K=1.0000]  
Remarks:

### WEC AND CCEC

Test:U:0V I:0A P:35.000W PF:0.0000 Freq:0Hz Lamp Flux:6801.01x1 lm		
NAME:	TYPE:	WEIGHT:
SPEC.:	DIM.:	SERIAL No.:
MFR.:	SUR.:	Shielding Angle:

pcc	80%			70%			50%			30%			10%			0	
pw	50%	30%	10%	50%	30%	10%	50%	30%	10%	50%	30%	10%	50%	30%	10%	0	
pfc	20%			20%			20%			20%			20%			0	
RCR	RCR:Room Cavity Ratio						Wall Exitance Coefficients(WEC)										
0.0																	
1.0	.314	.179	.057	.307	.175	.056	.294	.169	.054	.282	.162	.052	.270	.157	.051		
2.0	.302	.166	.051	.296	.163	.050	.284	.158	.049	.273	.153	.048	.263	.149	.047		
3.0	.282	.150	.045	.276	.148	.045	.266	.144	.044	.256	.140	.043	.247	.137	.042		
4.0	.261	.135	.040	.256	.134	.040	.246	.131	.039	.238	.128	.038	.230	.125	.038		
5.0	.241	.123	.036	.236	.121	.035	.228	.119	.035	.220	.116	.035	.213	.114	.034		
6.0	.223	.112	.032	.219	.111	.032	.212	.108	.032	.205	.106	.031	.198	.104	.031		
7.0	.207	.102	.029	.204	.101	.029	.197	.100	.029	.191	.098	.028	.185	.096	.028		
8.0	.193	.094	.027	.190	.093	.026	.184	.092	.026	.178	.090	.026	.173	.089	.026		
9.0	.180	.087	.024	.178	.087	.024	.172	.085	.024	.167	.084	.024	.163	.083	.024		
10.0	.169	.081	.023	.167	.081	.022	.162	.079	.022	.157	.078	.022	.153	.077	.022		

pcc	80%			70%			50%			30%			10%			0	
pw	50%	30%	10%	50%	30%	10%	50%	30%	10%	50%	30%	10%	50%	30%	10%	0	
pfc	20%			20%			20%			20%			20%			0	
RCR	RCR:Room Cavity Ratio						Ceiling Cavity Exitance Coefficients (CCEC)										
0.0	.190	.190	.190	.163	.163	.163	.111	.111	.111	.064	.064	.064	.020	.020	.020		
1.0	.181	.156	.134	.155	.134	.115	.106	.092	.080	.061	.053	.046	.019	.017	.015		
2.0	.174	.132	.097	.149	.114	.084	.102	.079	.058	.059	.046	.034	.019	.015	.011		
3.0	.167	.114	.073	.143	.099	.063	.098	.069	.044	.057	.040	.026	.018	.013	.009		
4.0	.160	.101	.057	.137	.087	.049	.094	.061	.035	.054	.036	.020	.018	.012	.007		
5.0	.152	.091	.046	.131	.079	.040	.090	.055	.028	.052	.032	.017	.017	.011	.005		
6.0	.145	.083	.038	.125	.072	.033	.086	.050	.023	.050	.030	.014	.016	.010	.005		
7.0	.139	.076	.032	.119	.066	.028	.082	.046	.020	.048	.027	.012	.015	.009	.004		
8.0	.132	.070	.028	.114	.061	.024	.079	.043	.017	.046	.025	.010	.015	.008	.003		
9.0	.126	.065	.024	.108	.057	.021	.075	.040	.015	.044	.024	.009	.014	.008	.003		
10.0	.120	.061	.022	.103	.053	.019	.072	.037	.014	.042	.022	.008	.014	.007	.003		

C Range: 0 - 360DEG  
C Interval: 15.0DEG  
Test Speed: HIGH  
Temperature:25.3℃  
Operators:  
Test Date:2023-03-27

γ Range: 0 - 90DEG  
γ Interval: 1.0DEG  
Test System:EVERFINE GO-2000B\_V1 SYSTEM V2.00.458  
Humidity:65.0%  
Test Distance:9.420m [K=1.0000]  
Remarks:

### UGR(Unified Glare Rating) Table

Test:U:0V I:0A P:35.000W PF:0.0000 Freq:0Hz Lamp Flux:6801.01x1 lm										
NAME:			TYPE:			WEIGHT:				
SPEC.:			DIM.:			SERIAL No.:				
MFR.:			SUR.:			Shielding Angle:				
ceiling/cavity	0.7	0.7	0.5	0.5	0.3	0.7	0.7	0.5	0.5	0.3
walls	0.5	0.3	0.5	0.3	0.3	0.5	0.3	0.5	0.3	0.3
working plane	0.2	0.2	0.2	0.2	0.2	0.2	0.2	0.2	0.2	0.2
Room dimensions	Viewed crosswise					Viewed endwise				
x = 2H y = 2H	26.4	28.0	26.6	28.2	28.4	20.4	22.0	20.6	22.2	22.4
3H	29.6	31.1	29.9	31.3	31.6	20.2	21.7	20.5	21.9	22.1
4H	30.9	32.3	31.3	32.6	32.9	20.1	21.5	20.4	21.8	22.0
6H	31.4	32.8	31.8	33.0	33.3	20.0	21.3	20.3	21.6	21.9
8H	31.4	32.7	31.8	33.0	33.3	20.0	21.2	20.3	21.5	21.8
12H	31.4	32.6	31.7	32.9	33.2	19.9	21.1	20.3	21.4	21.7
4H 2H	26.7	28.1	27.0	28.3	28.6	22.3	23.7	22.6	24.0	24.2
3H	30.1	31.3	30.4	31.6	31.9	22.2	23.4	22.6	23.7	24.0
4H	31.5	32.7	31.9	33.0	33.3	22.1	23.2	22.5	23.6	23.9
6H	32.2	33.2	32.6	33.5	33.9	22.0	23.0	22.4	23.4	23.8
8H	32.2	33.1	32.6	33.5	33.9	22.0	22.9	22.4	23.3	23.7
12H	32.1	33.0	32.6	33.4	33.8	22.0	22.8	22.4	23.2	23.6
8H 4H	31.4	32.4	31.8	32.7	33.1	23.1	24.0	23.5	24.4	24.8
6H	32.1	32.8	32.5	33.3	33.7	23.0	23.8	23.5	24.2	24.6
8H	32.1	32.8	32.6	33.2	33.7	23.0	23.7	23.5	24.1	24.6
12H	32.1	32.7	32.6	33.1	33.6	23.0	23.6	23.5	24.0	24.5
12H 4H	31.4	32.2	31.8	32.6	33.0	23.1	24.0	23.6	24.4	24.8
6H	32.1	32.7	32.5	33.2	33.6	23.1	23.8	23.5	24.2	24.6
8H	32.1	32.7	32.6	33.1	33.6	23.1	23.6	23.5	24.1	24.6
Variations with the observer position at spacings(CIE Pub.117):										
S = 1.0H	+ 0.1 / - 0.2					+ 0.3 / - 0.3				
1.5H	+ 0.5 / - 0.8					+ 0.8 / - 1.2				
2.0H	+ 0.8 / - 1.3					+ 1.0 / - 2.0				

CIE Pub.117, 6801 lm Total Lamp Luminous Flux Correct (8log(F/F0) = 6.7)  
Area: 0.033 m2

C Range: 0 - 360DEG  
C Interval: 15.0DEG  
Test Speed: HIGH  
Temperature:25.3℃  
Operators:  
Test Date:2023-03-27

γ Range: 0 - 90DEG  
γ Interval: 1.0DEG  
Test System:EVERFINE GO-2000B\_V1 SYSTEM V2.00.458  
Humidity:65.0%  
Test Distance:9.420m [K=1.0000]  
Remarks:

### UTILIZATION FACTORS TABLE

Test:U:0V I:0A P:35.000W PF:0.0000 Freq:0Hz Lamp Flux:6801.01x1 lm		
NAME:	TYPE:	WEIGHT:
SPEC.:	DIM.:	SERIAL No.:
MFR.:	SUR.:	Shielding Angle:

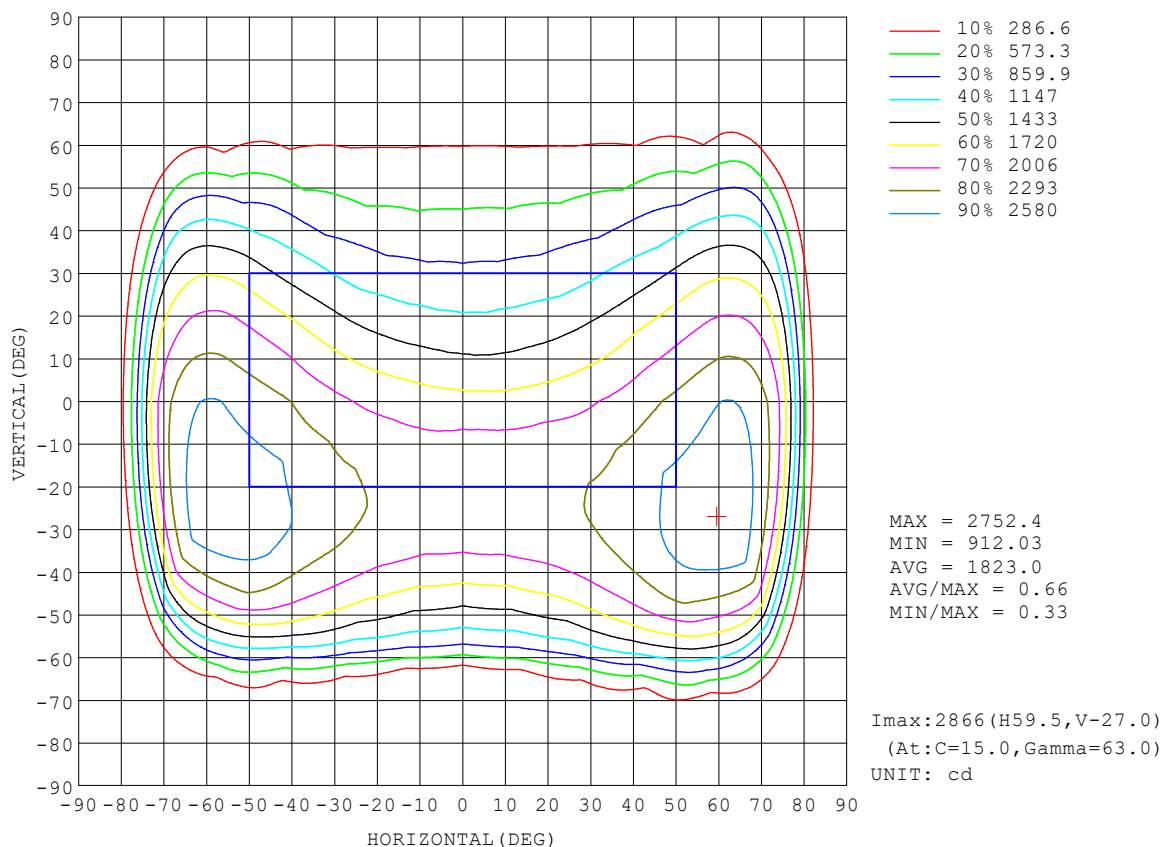
REFLECTANCE										
Ceiling	0.8	0.8	0.8	0.7	0.7	0.7	0.5	0.5	0.5	0
Walls	0.7	0.5	0.3	0.7	0.5	0.3	0.7	0.5	0.3	0
Working plane	0.2	0.2	0.2	0.2	0.2	0.2	0.2	0.2	0.2	0
ROOM INDEX	UTILIZATION FACTORS (PERCENT) $k(RI) \times RCR = 5$									
$k = 0.60$	54	41	34	53	41	34	52	40	33	27
0.80	64	51	44	63	51	43	61	50	43	36
1.00	73	61	53	72	60	53	69	62	52	45
1.25	80	69	62	79	69	61	76	67	60	53
1.50	86	75	68	84	74	67	81	73	66	58
2.00	93	84	78	92	83	77	88	81	75	67
2.50	98	90	83	96	88	82	92	85	80	72
3.00	101	94	89	99	93	87	95	90	85	77
4.00	106	100	95	103	98	94	99	95	91	82
5.00	108	103	99	106	102	98	101	98	95	85
ROOM INDEX	UF (total)									Direct
According to DIN EN 13032-2 2004			Suspended					SHRNOM = 1.25		

C Range: 0 - 360DEG  
C Interval: 15.0DEG  
Test Speed: HIGH  
Temperature: 25.3 °C  
Operators:  
Test Date: 2023-03-27

γ Range: 0 - 90DEG  
γ Interval: 1.0DEG  
Test System: EVERFINE GO-2000B\_V1 SYSTEM V2.00.458  
Humidity: 65.0%  
Test Distance: 9.420m [K=1.0000]  
Remarks:

# ISOCANDELA DIAGRAM

Test:U:0V I:0A P:35.000W PF:0.0000 Freq:0Hz Lamp Flux:6801.01x1 lm		
NAME:	TYPE:	WEIGHT:
SPEC.:	DIM.:	SERIAL No.:
MFR.:	SUR.:	Shielding Angle:



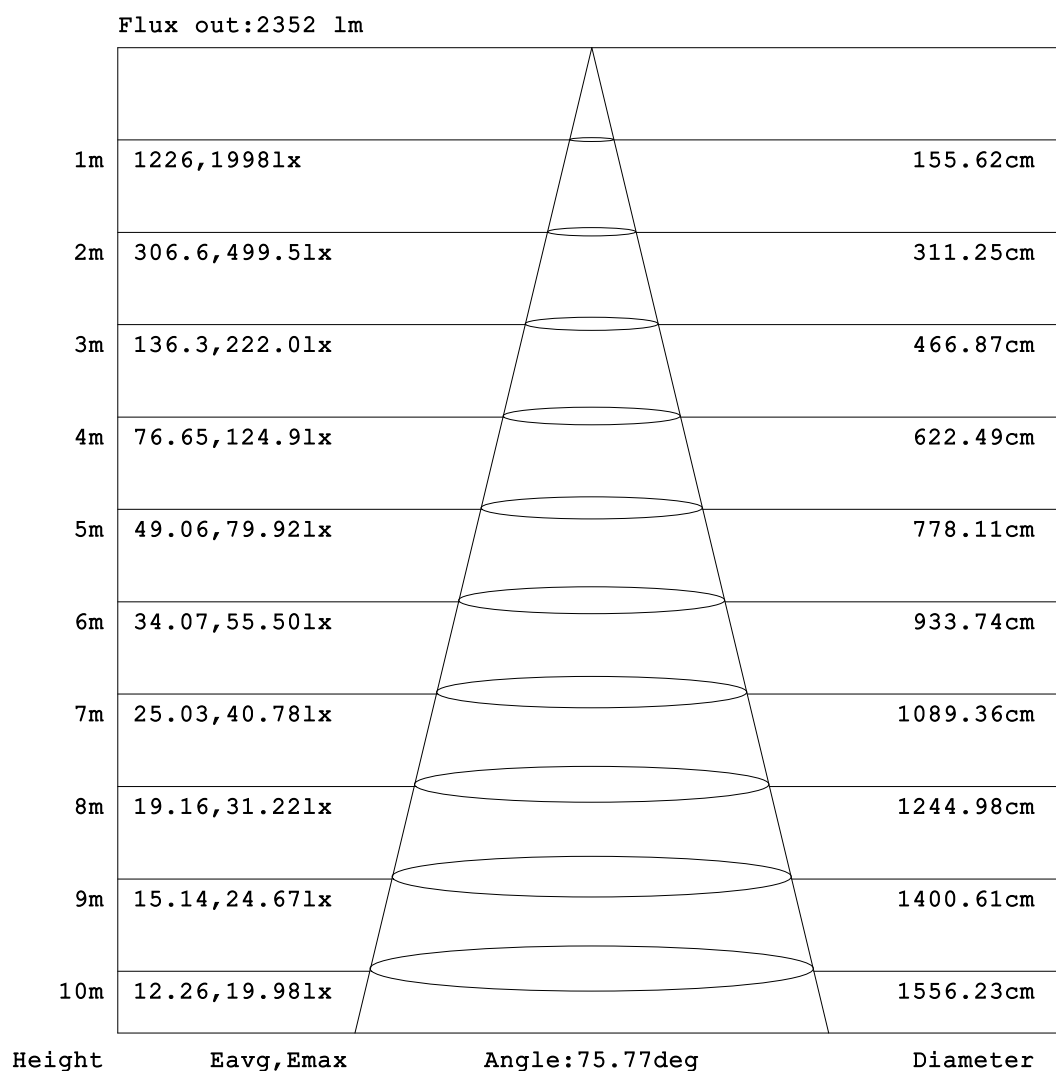
C Range: 0 - 360DEG  
C Interval: 15.0DEG  
Test Speed: HIGH  
Temperature:25.3℃  
Operators:  
Test Date:2023-03-27

γ Range: 0 - 90DEG  
γ Interval: 1.0DEG  
Test System:EVERFINE GO-2000B\_V1 SYSTEM V2.00.458  
Humidity:65.0%  
Test Distance:9.420m [K=1.0000]  
Remarks:



### AAI Figure

Test:U:0V I:0A P:35.000W PF:0.0000 Freq:0Hz Lamp Flux:6801.01x1 lm		
NAME:	TYPE:	WEIGHT:
SPEC.:	DIM.:	SERIAL No.:
MFR.:	SUR.:	Shielding Angle:



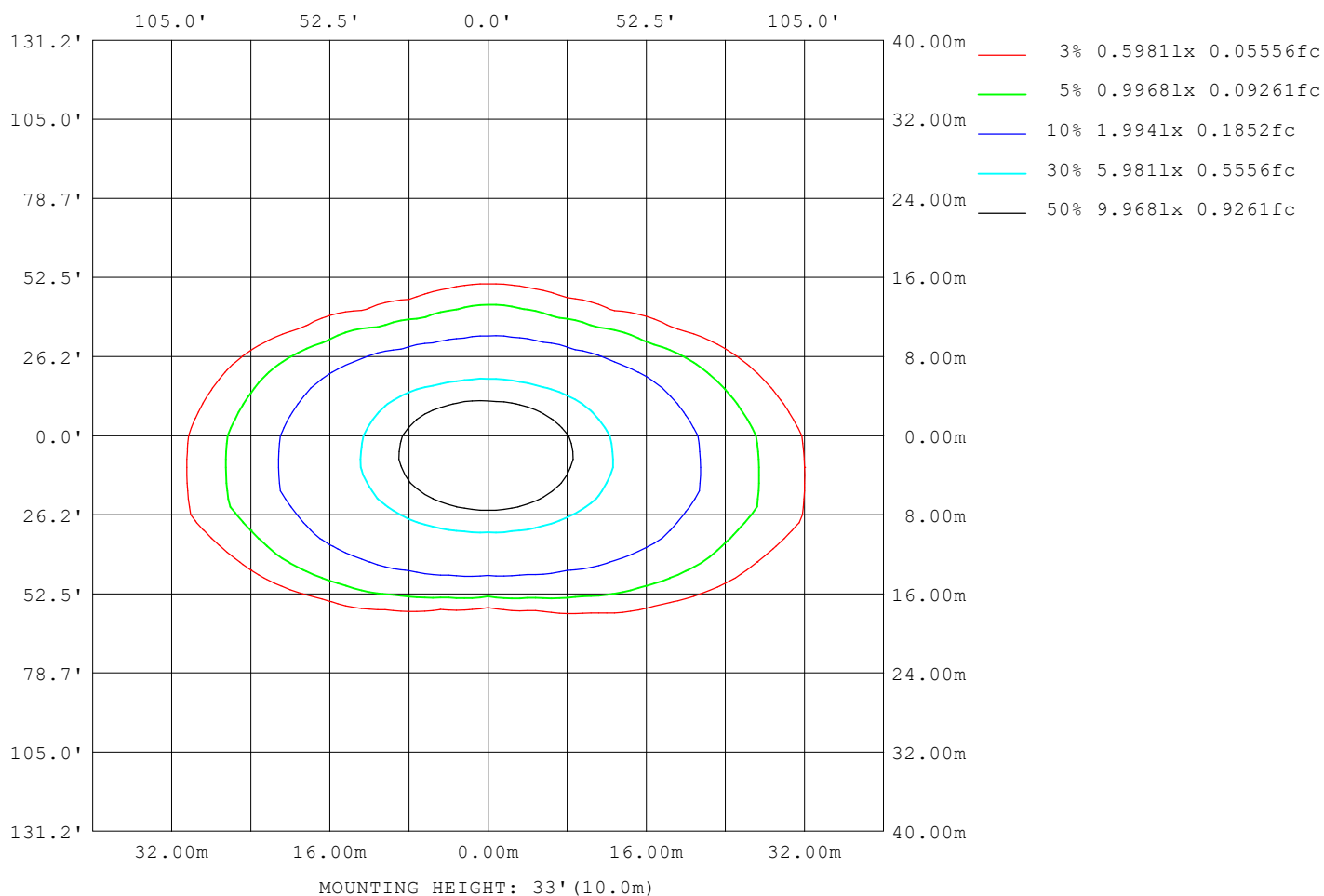
Note:The Curves indicate the illuminated area and the average illumination when the luminaire is at different distance.

C Range: 0 - 360DEG  
C Interval: 15.0DEG  
Test Speed: HIGH  
Temperature:25.3℃  
Operators:  
Test Date:2023-03-27

γ Range: 0 - 90DEG  
γ Interval: 1.0DEG  
Test System:EVERFINE GO-2000B\_V1 SYSTEM V2.00.458  
Humidity:65.0%  
Test Distance:9.420m [K=1.0000]  
Remarks:

### ISOLUX DIAGRAM

Test:U:0V I:0A P:35.000W PF:0.0000 Freq:0Hz Lamp Flux:6801.01x1 lm		
NAME:	TYPE:	WEIGHT:
SPEC.:	DIM.:	SERIAL No.:
MFR.:	SUR.:	Shielding Angle:



C Range: 0 - 360DEG  
C Interval: 15.0DEG  
Test Speed: HIGH  
Temperature:25.3°C  
Operators:  
Test Date:2023-03-27

γ Range: 0 - 90DEG  
γ Interval: 1.0DEG  
Test System:EVERFINE GO-2000B\_V1 SYSTEM V2.00.458  
Humidity:65.0%  
Test Distance:9.420m [K=1.0000]  
Remarks:

### LED Avg.L Report

Test:U:0V I:0A P:35.000W PF:0.0000 Freq:0Hz Lamp Flux:6801.01x1 lm		
NAME:	TYPE:	WEIGHT:
SPEC.:	DIM.:	SERIAL No.:
MFR.:	SUR.:	Shielding Angle:

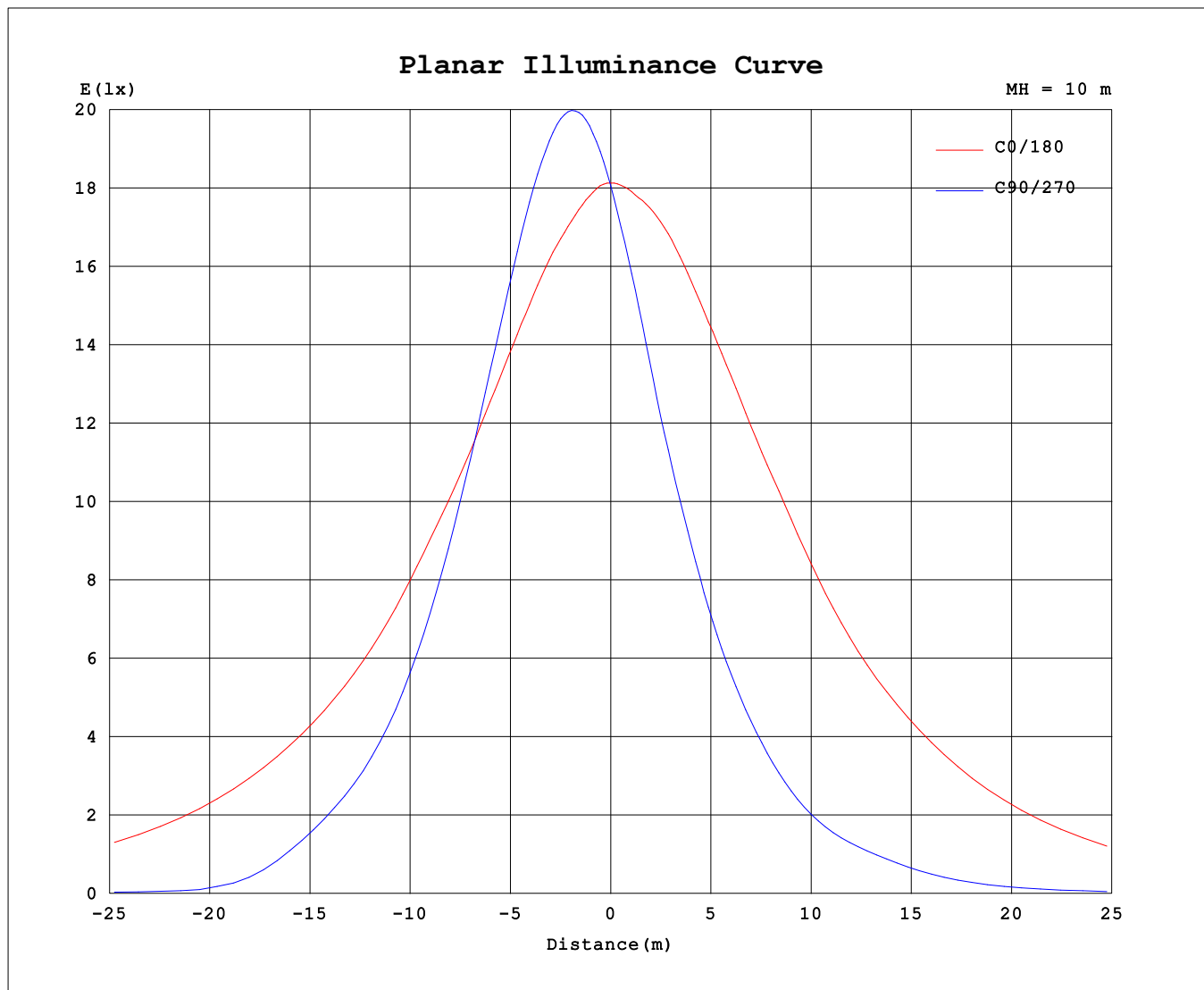
AvgL	cd/m2
L_0~180 (65) av	180526
L_0~180 (75) av	178468
L_0~180 (85) av	17584
L_90~270 (65) av	9151
L_90~270 (75) av	7200
L_90~270 (85) av	6846
L_45 (65) av	60444
L_45 (75) av	13799
L_45 (85) av	7894

Standard: GB/T 29293-2012

C Range: 0 - 360DEG  
C Interval: 15.0DEG  
Test Speed: HIGH  
Temperature:25.3℃  
Operators:  
Test Date:2023-03-27

γ Range: 0 - 90DEG  
γ Interval: 1.0DEG  
Test System:EVERFINE GO-2000B\_V1 SYSTEM V2.00.458  
Humidity:65.0%  
Test Distance:9.420m [K=1.0000]  
Remarks:

### Planar Illuminance Curve



C Range: 0 - 360DEG  
 C Interval: 15.0DEG  
 Test Speed: HIGH  
 Temperature: 25.3 °C  
 Operators:  
 Test Date: 2023-03-27

γ Range: 0 - 90DEG  
 γ Interval: 1.0DEG  
 Test System: EVERFINE GO-2000B\_V1 SYSTEM V2.00.458  
 Humidity: 65.0%  
 Test Distance: 9.420m [K=1.0000]  
 Remarks:

Test:U:0V I:0A P:35.000W PF:0.0000 Freq:0Hz Lamp Flux:6801.01x1 lm		
NAME:	TYPE:	WEIGHT:
SPEC.:	DIM.:	SERIAL No.:
MFR.:	SUR.:	Shielding Angle:

UNIT: cd

[illegible]

```

γ Range: 0 - 90DEG
γ Interval: 1.0DEG
Test System:EVERFINE GO-2000B_V1 SYSTEM V2.00.458
Humidity:65.0%
Test Distance:9.420m [K=1.0000]
Remarks:

```

```

γ Range: 0 - 90DEG
γ Interval: 1.0DEG
Test System:EVERFINE GO-2000B_V1 SYSTEM V2.00.458
Humidity:65.0%
Test Distance:9.420m [K=1.0000]
Remarks:

```